

Certificate of Analysis



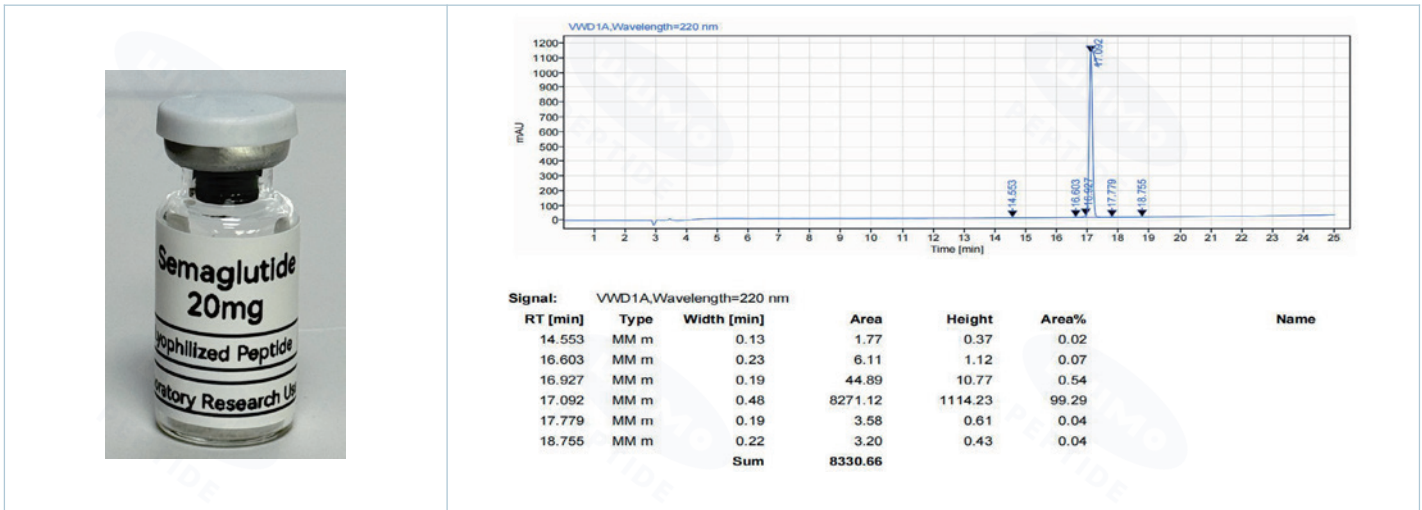
Website: <https://peptide.wumolab.com/>

Contact at peptide@wumolab.com

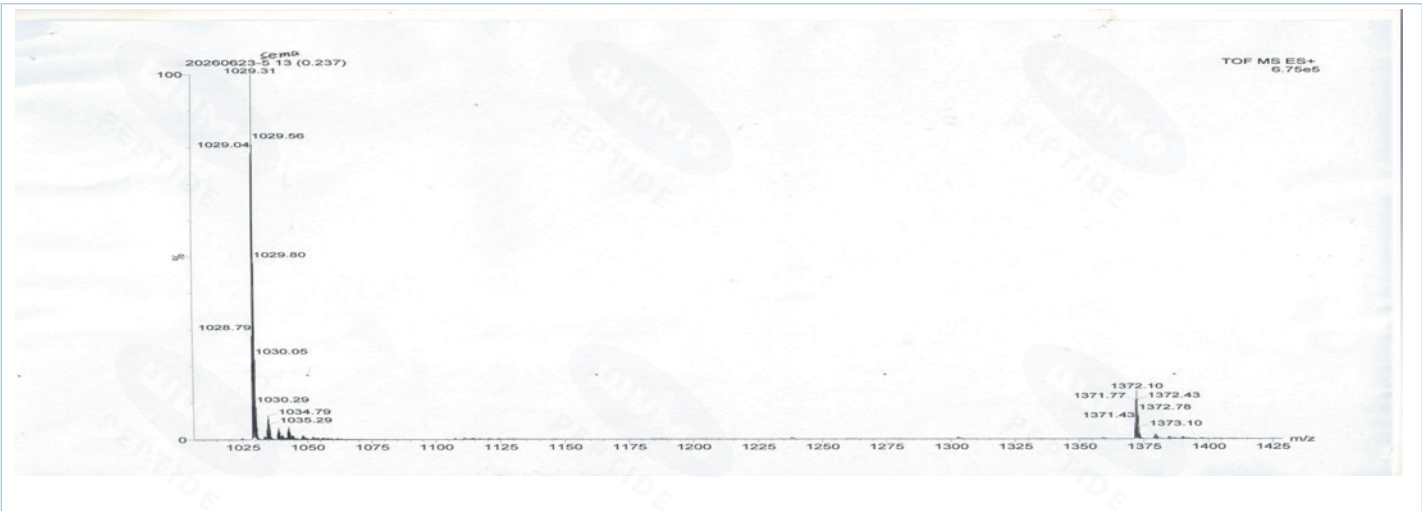
Product Name	Semaglutide 20mg/vial	Received Date	June 18, 2026
Batch No.	WUSM0616-001	Reported Date	June 25, 2026
Sample description	White lyophilized powder in labeled vial	Tests requested	Identity and purity assessment of peptide vial sample

Specification	Result	Method	Status
Identity	Semaglutide	ESI-MS	✓ Conforms
Fill Amount / Label Claim	20 mg/vial	Filling Record	✓ Conforms
Purity	99.29%	RP-HPLC (220 nm)	✓ Conforms

HPLC Chromatogram (Retention Time: 17.092 min)



Mass Spectrum (ESI-MS)



Remarks: For laboratory research use only. Not for human or veterinary use.

Checked By

Andy Gong

This report summarizes the test results for the submitted sample. Purity was analyzed by RP-HPLC, and identity was assessed by ESI-MS. The results apply only to the tested batch/sample and are provided for research and quality-control reference only.