

Certificate of Analysis



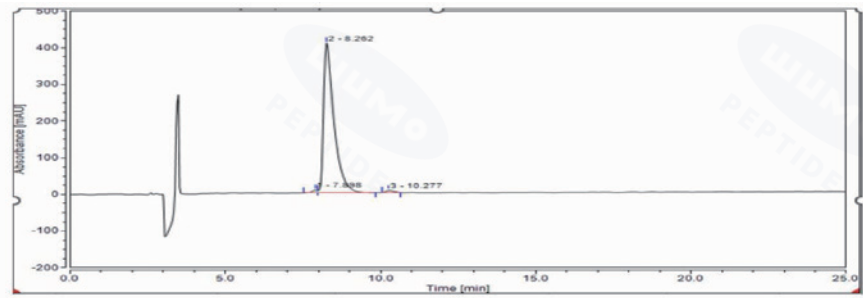
Website: <https://peptide.wumolab.com/>

Contact at peptide@wumolab.com

Product Name	BPC-157 20 mg/vial	Received Date	June 18, 2026
Batch No.	WUBC0616-001	Reported Date	June 25, 2026
Sample description	White lyophilized powder in labeled vial	Tests requested	Identity and purity assessment of peptide vial sample

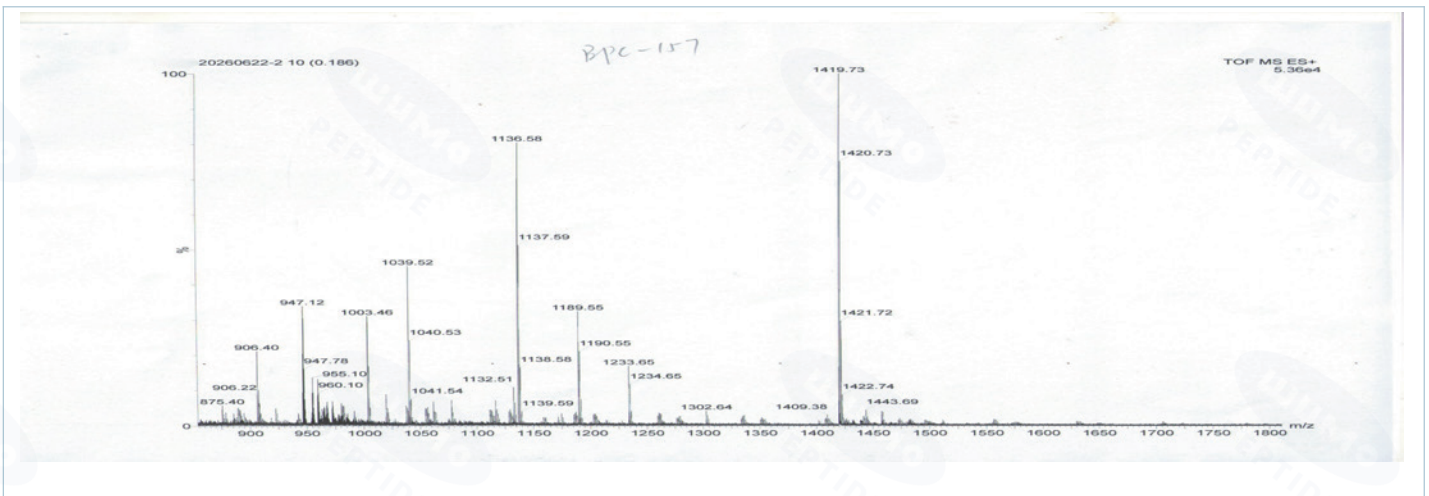
Specification	Result	Method	Status
Identity	BPC-157	ESI-MS	✓ Conforms
Fill Amount / Label Claim	20 mg/vial	Filling Record	✓ Conforms
Purity	99.31%	RP-HPLC (220 nm)	✓ Conforms

HPLC Chromatogram (Retention Time: 8.262 min)



No.	Peak Name	Retention Time min	Area mAU*min	Height mAU	Relative Area %	Relative Height %	Amount
n.a.	Component1	n.a.	n.a.	n.a.	n.a.	n.a.	n.a.
1		7.898	1.475	2.789	0.67	1.69	n.a.
2		8.262	157.577	412.549	99.31	96.97	n.a.
3		10.277	1.681	0.083	0.02	1.34	n.a.
Total			160.733	416.211	100	100.00	

Mass Spectrum (ESI-MS)



Remarks: For laboratory research use only. Not for human or veterinary use.

Checked By

Andy Gong

This report summarizes the test results for the submitted sample. Purity was analyzed by RP-HPLC, and identity was assessed by ESI-MS. The results apply only to the tested batch/sample and are provided for research and quality-control reference only.