

# Certificate of Analysis



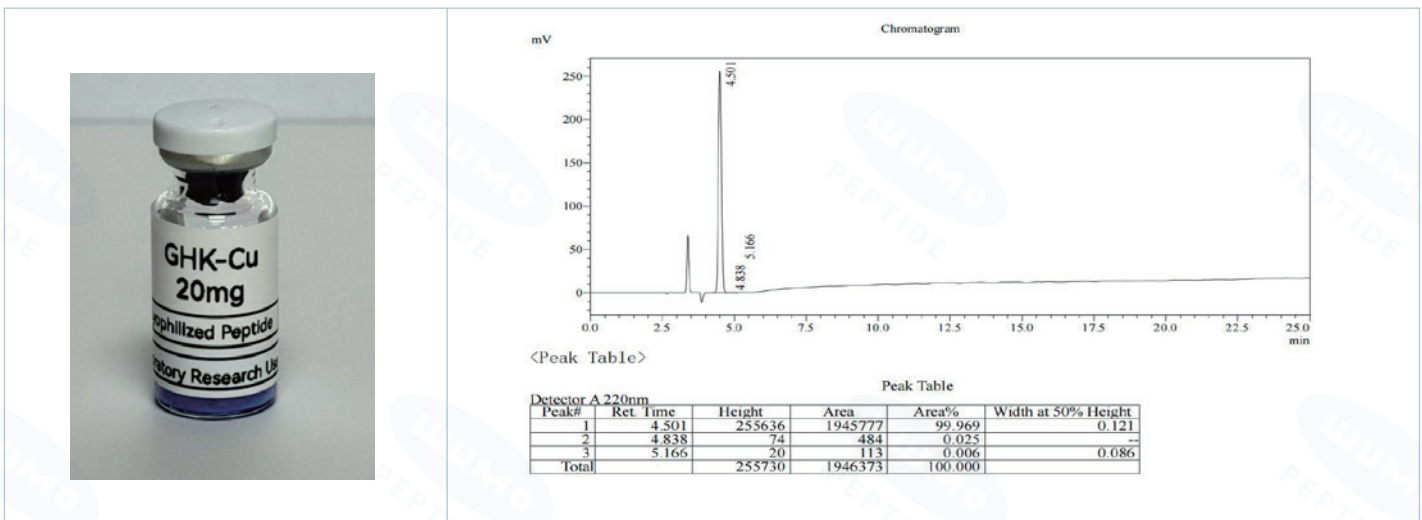
Website: <https://peptide.wumolab.com/>

Contact at [peptide@wumolab.com](mailto:peptide@wumolab.com)

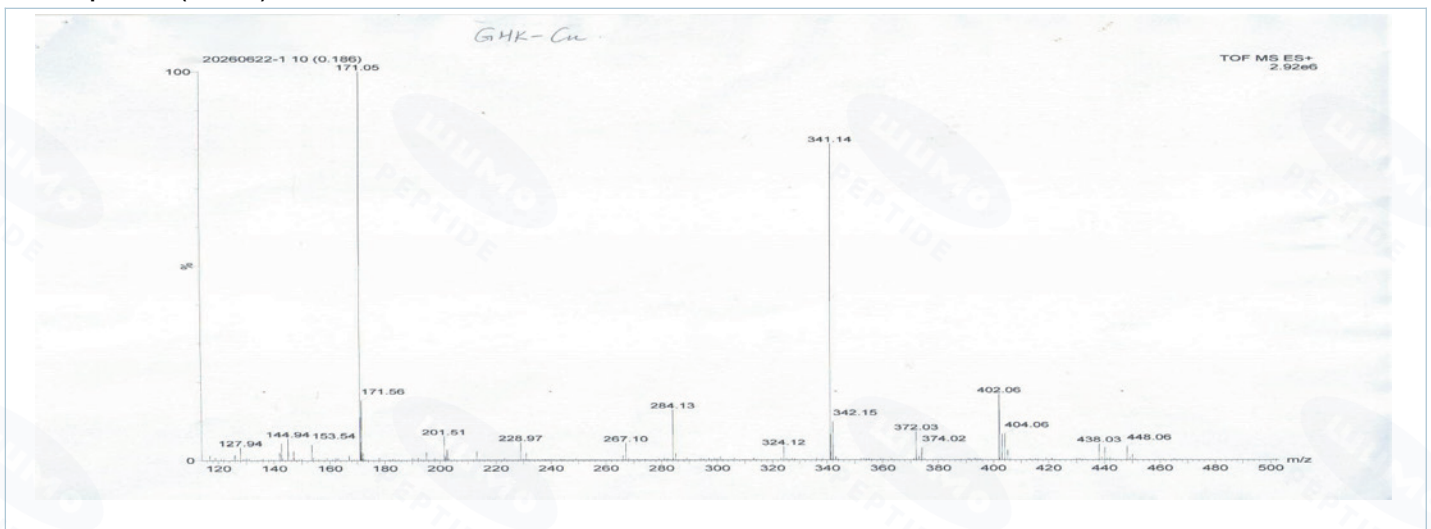
|                           |   |                        |   |
|---------------------------|---|------------------------|---|
| <b>Product Name</b>       | <b>GHK-Cu 20 mg/vial</b>                | <b>Received Date</b>   | June 18, 2026   |
| <b>Batch No.</b>          | WUCU0616-001                            | <b>Reported Date</b>   | June 25, 2026   |
| <b>Sample description</b> | Blue lyophilized powder in labeled vial | <b>Tests requested</b> | Identity and purity assessment of peptide vial sample |

| Specification             | Result            | Method           | Status            |
|---------------------------|-------------------|------------------|-------------------|
| Identity                  | <b>GHK-Cu</b>     | ESI-MS           | ✓ <b>Conforms</b> |
| Fill Amount / Label Claim | <b>20 mg/vial</b> | Filling Record   | ✓ <b>Conforms</b> |
| Purity                    | <b>99.969%</b>    | RP-HPLC (220 nm) | ✓ <b>Conforms</b> |

## HPLC Chromatogram (Retention Time: 4.501 min)



## Mass Spectrum (ESI-MS)



**Remarks:** For laboratory research use only. Not for human or veterinary use.

Checked By

*Andy Gong*

This report summarizes the test results for the submitted sample. Purity was analyzed by RP-HPLC, and identity was assessed by ESI-MS. The results apply only to the tested batch/sample and are provided for research and quality-control reference only.